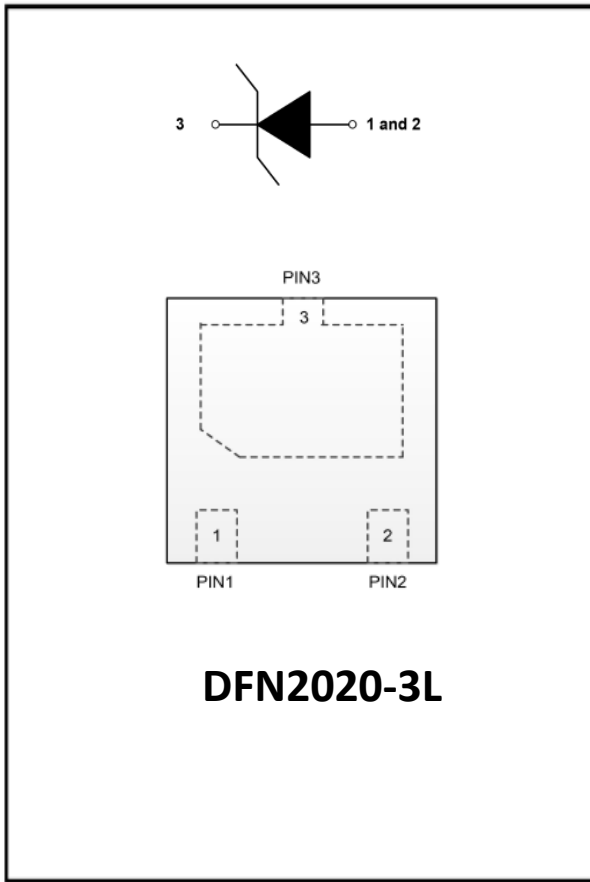


## 1-Line, Uni-directional, Transient Voltage Suppressor



### Features

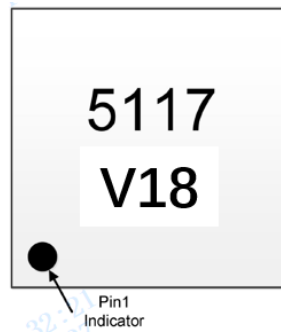
- Ultra small package
- Stand-off voltage: 12V Max
- Transient protection for each line according to  
IEC61000-4-2(ESD):  $\pm 30\text{kV}$  (contact)  
IEC61000-4-5(surge): 200A (8/20 $\mu\text{s}$ )
- Low leakage current
- Low clamping voltage
- RoHS Compliant

### Applications

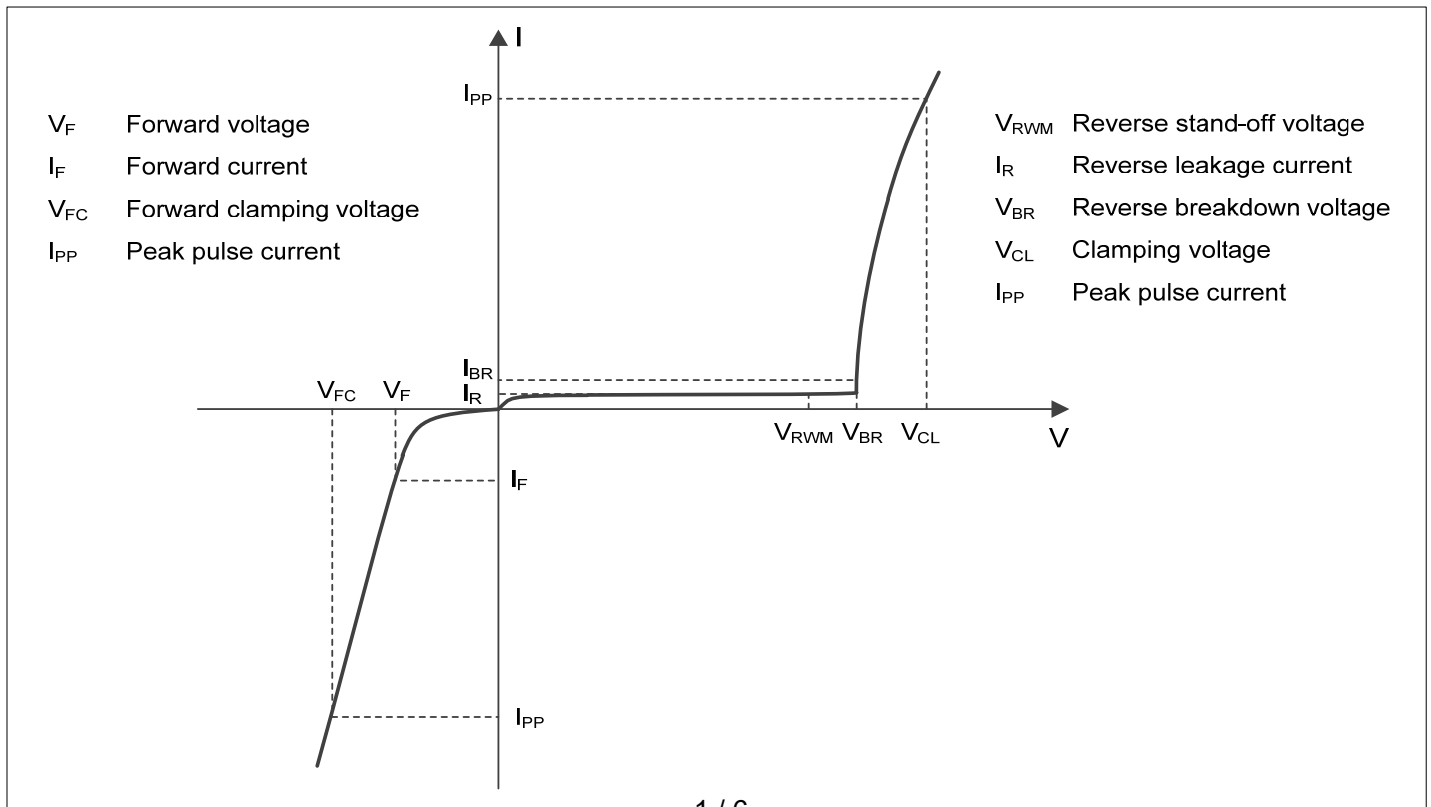
- Power supply protection
- Power management
- Battery Contacts

### Mechanical Characteristics

- Package: DFN2020-3L
- Case Material: "Green" Molding Compound.
- Marking Information: See Below



### ■Definitions of electrical characteristics





# ESD18VP4A1

## ■Absolute Maximum Ratings (Ta=25°C unless otherwise specified)

PARAMETER	SYMBOL	Rating	UNIT
Peak pulse power ( $t_p = 8/20\mu s$ )	$P_{pk}$	5700	W
ESD according to IEC61000-4-2 air discharge	$V_{ESD}$	$\pm 30$	KV
ESD according to IEC61000-4-2 contact discharge		$\pm 30$	KV
Junction temperature	$T_J$	125	°C
Storage temperature	$T_{STG}$	-55~150	°C

## ■Electrical Characteristics (Ta=25°C Unless otherwise specified)

PARAMETER	Symbol	UNIT	Conditions	Min	Typ	Max
Reverse maximum working voltage	$V_{RWM}$	V				18
Reverse leakage current	$I_R$	$\mu A$	$V_{RWM} = 18V$			1
Reverse breakdown voltage	$V_{BR}$	V	$I_{BR} = 1mA$	18		22
Clamping voltage <sup>3)</sup>	$V_{CL}$	V	$I_{PP} = 150A, t_p = 8/20\mu s$			38
Junction capacitance	$C_J$	pF	$V_R = 0V, f = 1MHz$		1000	1200

Notes:

- 1) Non-repetitive current pulse, according to IEC61000-4-5. (8/20 $\mu s$  current waveform)
- 2) Non-repetitive current pulse, according to IEC61643-321. (10/1000 $\mu s$  current waveform)
- 3) Measured from pin 3 to pin 1 and pin 2.

## ■Ordering Information (Example)

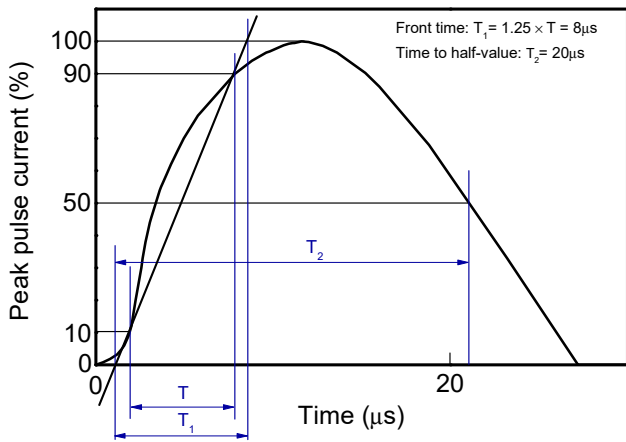
PREFERED P/N	PACKING CODE	UNIT WEIGHT(mg)	MINIMUM PACKAGE(pcs)	INNER BOX QUANTITY(pcs)	OUTER CARTON QUANTITY(pcs)	DELIVERY MODE
ESD18VP4A1	F1	Approximate 7	3000	30000	120000	7" reel



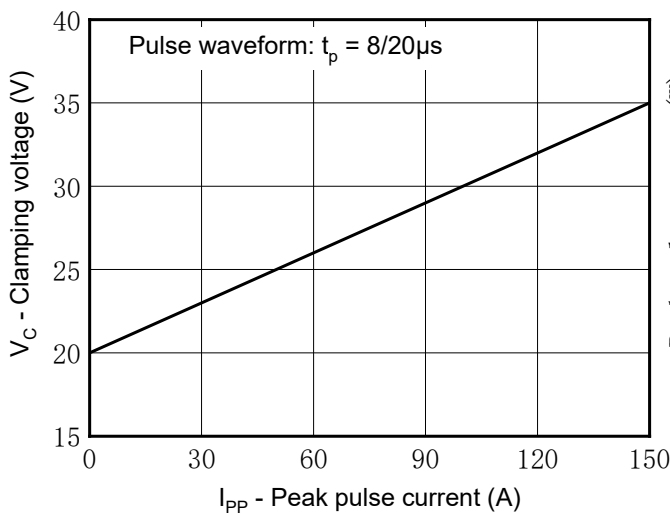
# ESD18VP4A1

## ■ Typical Performance Characteristics (Ta=25°C unless otherwise Specified)

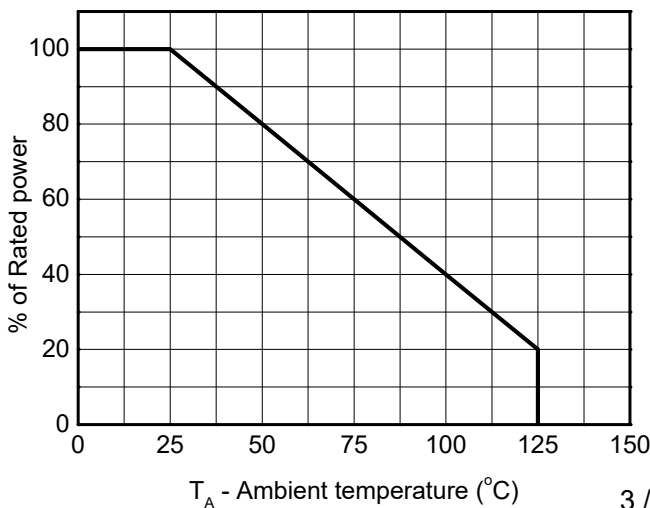
8/20μs waveform per IEC61000-4-5



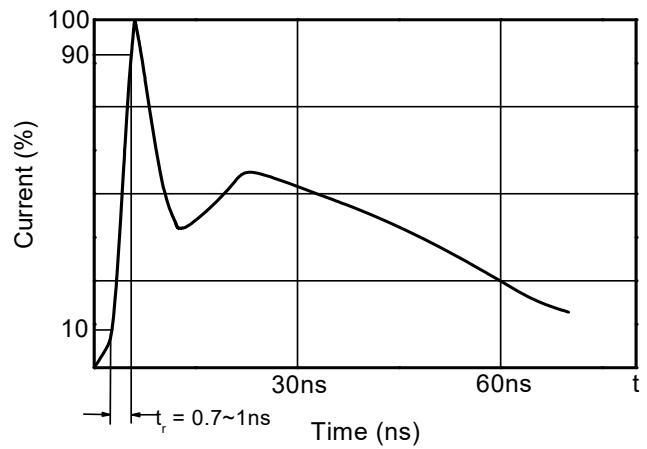
Clamping voltage vs. Peak pulse current



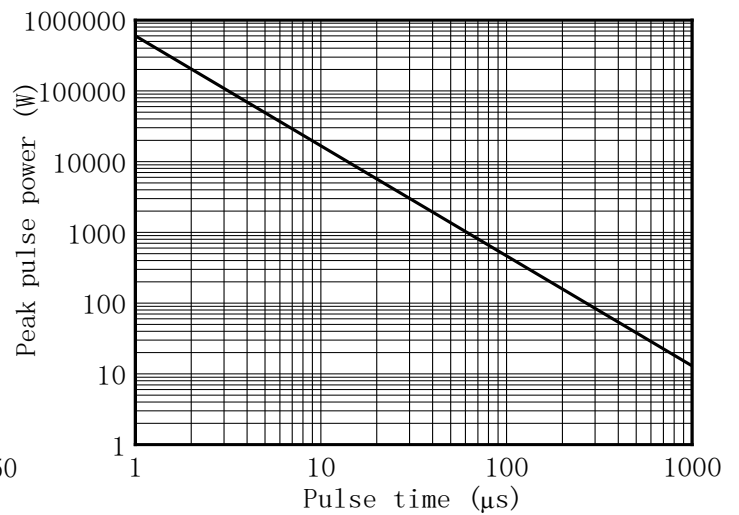
Power derating vs. Ambient temperature



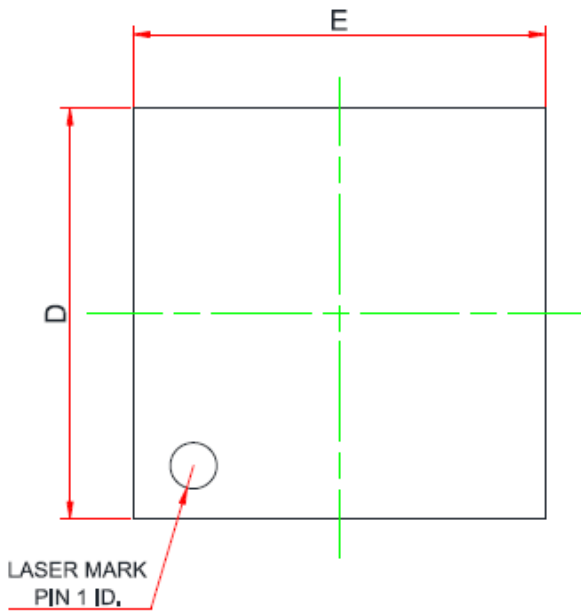
Contact discharge current waveform per IEC61000-4-2



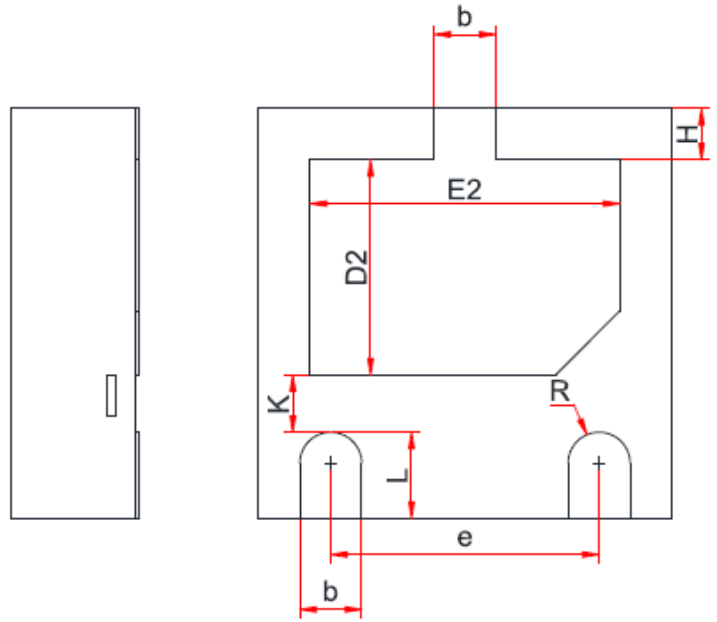
Non-repetitive peak pulse power vs. Pulse time



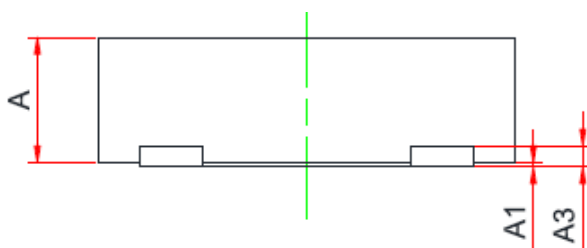
## ■ Outline Dimensions



Top View



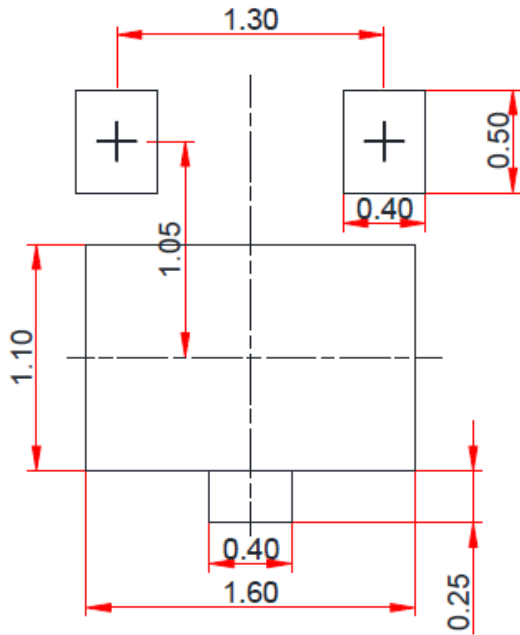
Bottom View



Side View

Symbol	Dimensions In Millimeters		
	Min.	Typ.	Max.
A	0.50	0.60	0.65
A1	0.00	0.02	0.05
A3	0.15 REF.		
b	0.25	0.30	0.35
D	1.90	2.00	2.10
E	1.90	2.00	2.10
D2	0.95	1.05	1.15
E2	1.40	1.50	1.60
e	1.20	1.30	1.40
H	0.20	0.25	0.30
K	0.20	0.30	0.40
L	0.35	0.40	0.45
R	0.13	-	-

## ■ Recommend land pattern



### Notes:

This recommended land pattern is for reference purposes only. Please consult your manufacturing group to ensure your PCB design guidelines are met



## Disclaimer

The information presented in this document is for reference only. Yangzhou Yangjie Electronic Technology Co., Ltd. reserves the right to make changes without notice for the specification of the products displayed herein to improve reliability, function or design or otherwise.

The product listed herein is designed to be used with ordinary electronic equipment or devices, and not designed to be used with equipment or devices which require high level of reliability and the malfunction of which would directly endanger human life (such as medical instruments, transportation equipment, aerospace machinery, nuclear-reactor controllers, fuel controllers and other safety devices), Yangjie or anyone on its behalf, assumes no responsibility or liability for any damages resulting from such improper use of sale.

This publication supersedes & replaces all information previously supplied. For additional information, please visit our website [http:// www.21yangjie.com](http://www.21yangjie.com) , or consult your nearest Yangjie's sales office for further assistance.