



Test Report

Report No. A2250057107101005

Page 1 of 10

Company Name YANGZHOU YANGJIE ELECTRONIC TECHNOLOGY CO., LTD.
shown on Report
Address NO.6 HEYE WEST ROAD, HANJIANG DISTRICT, YANGZHOU, JIANGSU PROVINCE

Sample Received Date Feb. 6, 2025
Testing Period Feb. 6, 2025 to Feb. 10, 2025

Test Requested As specified by client, to test Lead (Pb), Cadmium (Cd), Mercury (Hg), Hexavalent Chromium (Cr(VI)), Polybrominated Biphenyls (PBBs), Polybrominated Diphenyl Ethers (PBDEs), Phthalates (DBP, BBP, DEHP, DIBP) in the submitted sample(s).

Test Method/Test Result(s) Please refer to the following page(s).



Approved by

Chen Kaimin

Date

Feb. 10, 2025

Chen kaimin
Lab Manager

No. R794241377

Centre Testing International Pinbiao(Shanghai) Co., Ltd.

No.1351, Wanfang Road, Minhang District, Shanghai, China

Test Report

Report No. A2250057107101005

Page 2 of 10

The following sample(s) and sample information was/were submitted and identified by/on the behalf of the applicant

CTI Sample ID	Sample Name(s)	Model No.	Reference Report No. - CTI Sample ID
004	Soldering Package Devices	R-1、A-405、D0-41、D0-15、D0-15L、DO-201AD、DO-201AE、R-6、SMA-W、YJ-41、2KBJ、4KBJ、6KBJ、PB、ABS、D3K、DBS、DB、DBLS、DBL、GBP、GBU、JA、JB、JC、MBLS、MBS、YBS2、YBS3.YBS3mini、YBS6、YBS2G、KBP、KBU、KBL、TSB、GBPC(W)GBPC、BR-W、BR、KBPC-W、KBPC25135150、KBPC1、KBPC6、KBPC8、BR-L、SKBPC、MT35-A、RS2、SBR25、M130、M140、MT、MT.B、PTVS、S25VB、S35VB、SMA、SMB、SMC、SOD123FL、SOD323FL、SOD123HE、SOD323HE、SMAF、SMBF、SMG、SME、TO-277、SOD-323S、DO-218、TO-263、TO-263L、TO-263-6L、TO-252、TO-220AB、TO220AC、ITO-220AB、ITO-220AC、R6、TO-247、TO-247AB、TO-247AC.TO-247Plus、TO-247-4L、TO-247-2L、GF019、GF020、GF023、GF025.GF030K、GF030U、GF040、GF040C、GF040H、GFS、GF009、SOT-223、SOT-89、TOLL、PDFN5060、PDFN5060-8L、TO-220、TO-220F、TO-251S、TO-92、TO-247AD、STO-220、TOLL	A2250057107101004-004
005		/	

Remark:

The samples with the reference information in the table above are non-tested in this report. According to the client's statement, the material of the samples in the column "Reference Report No. - CTI Sample ID. " in the table above are the same as the " CTI Sample ID ".

Test Report

Report No. A2250057107101005

Page 3 of 10

Conclusion

<u>Tested Sample</u>	<u>According to standard/directive</u>	<u>Result</u>
Submitted Sample	RoHS Directive 2011/65/EU with amendment (EU) 2015/863	PASS

PASS means that the results shown on the report comply with the limits set by RoHS Directive 2011/65/EU with amendment (EU) 2015/863.

Test Report

Report No. A2250057107101005

Page 4 of 10

Test Method

Tested Item(s)	Test Method	Measured Equipment(s)
Lead (Pb)	IEC 62321-5:2013	ICP-OES
Cadmium (Cd)	IEC 62321-5:2013	ICP-OES
Mercury (Hg)	IEC 62321-4:2013+AMD1:2017 CSV	ICP-OES
Hexavalent Chromium (Cr(VI))	IEC 62321-7-1:2015	UV-Vis
	IEC 62321-7-2:2017 and/or determination of Total Chromium by IEC 62321-5:2013	UV-Vis/ICP-OES
Polybrominated Biphenyls (PBBs)	IEC 62321-12:2023	GC-MS
Polybrominated Diphenyl Ethers (PBDEs)	IEC 62321-12:2023	GC-MS
Phthalates (DBP, BBP, DEHP, DIBP)	IEC 62321-12:2023	GC-MS

Test Result(s)

Tested Item(s)	Result		MDL	Limit
	004	005		
Lead (Pb)	20277 mg/kg*	N.D.	2 mg/kg	1000 mg/kg
Cadmium (Cd)	N.D.	N.D.	2 mg/kg	100 mg/kg
Mercury (Hg)	N.D.	N.D.	2 mg/kg	1000 mg/kg
Hexavalent Chromium (Cr(VI))	N.D.	--	8 mg/kg	1000 mg/kg
	--	N.D. ▼	0.10 µg/cm ² (LOQ)	

Tested Item(s)	Result		MDL	Limit
	004			
Polybrominated Biphenyls (PBBs)				
Monobromobiphenyl	N.D.		25 mg/kg	1000 mg/kg
Dibromobiphenyl	N.D.		25 mg/kg	
Tribromobiphenyl	N.D.		25 mg/kg	
Tetrabromobiphenyl	N.D.		25 mg/kg	
Pentabromobiphenyl	N.D.		25 mg/kg	
Hexabromobiphenyl	N.D.		25 mg/kg	
Heptabromobiphenyl	N.D.		25 mg/kg	
Octabromobiphenyl	N.D.		25 mg/kg	
Nonabromobiphenyl	N.D.		25 mg/kg	
Decabromobiphenyl	N.D.		25 mg/kg	

Test Report

Report No. A2250057107101005

Page 5 of 10

Tested Item(s)	Result	MDL	Limit
	004		
Polybrominated Diphenyl Ethers (PBDEs)			
Monobromodiphenyl ether	N.D.	25 mg/kg	1000 mg/kg
Dibromodiphenyl ether	N.D.	25 mg/kg	
Tribromodiphenyl ether	N.D.	25 mg/kg	
Tetrabromodiphenyl ether	N.D.	25 mg/kg	
Pentabromodiphenyl ether	N.D.	25 mg/kg	
Hexabromodiphenyl ether	N.D.	25 mg/kg	
Heptabromodiphenyl ether	N.D.	25 mg/kg	
Octabromodiphenyl ether	N.D.	25 mg/kg	
Nonabromodiphenyl ether	N.D.	25 mg/kg	
Decabromodiphenyl ether	N.D.	25 mg/kg	

Tested Item(s)	Result	MDL	Limit
	004		
Phthalates (DBP, BBP, DEHP, DIBP)			
Dibutyl phthalate (DBP) CAS#:84-74-2	N.D.	50 mg/kg	1000 mg/kg
Butyl benzyl phthalate (BBP) CAS#:85-68-7	N.D.	50 mg/kg	1000 mg/kg
Di-(2-ethylhexyl) phthalate (DEHP) CAS#:117-81-7	N.D.	50 mg/kg	1000 mg/kg
Diisobutyl phthalate (DIBP) CAS#:84-69-5	N.D.	50 mg/kg	1000 mg/kg

Test Report

Report No. A2250057107101005

Page 6 of 10

Tested Item(s)	Result	MDL	Limit
	005		
Polybrominated Biphenyls (PBBs)			
Monobromobiphenyl	N.D.	25 mg/kg	1000 mg/kg
Dibromobiphenyl	N.D.	25 mg/kg	
Tribromobiphenyl	N.D.	25 mg/kg	
Tetrabromobiphenyl	N.D.	25 mg/kg	
Pentabromobiphenyl	N.D.	25 mg/kg	
Hexabromobiphenyl	N.D.	25 mg/kg	
Heptabromobiphenyl	N.D.	25 mg/kg	
Octabromobiphenyl	N.D.	25 mg/kg	
Nonabromobiphenyl	N.D.	25 mg/kg	
Decabromobiphenyl	N.D.	25 mg/kg	

Tested Item(s)	Result	MDL	Limit
	005		
Polybrominated Diphenyl Ethers (PBDEs)			
Monobromodiphenyl ether	N.D.	25 mg/kg	1000 mg/kg
Dibromodiphenyl ether	N.D.	25 mg/kg	
Tribromodiphenyl ether	N.D.	25 mg/kg	
Tetrabromodiphenyl ether	N.D.	25 mg/kg	
Pentabromodiphenyl ether	N.D.	25 mg/kg	
Hexabromodiphenyl ether	N.D.	25 mg/kg	
Heptabromodiphenyl ether	N.D.	25 mg/kg	
Octabromodiphenyl ether	N.D.	25 mg/kg	
Nonabromodiphenyl ether	N.D.	25 mg/kg	
Decabromodiphenyl ether	N.D.	25 mg/kg	

Test Report

Report No. A2250057107101005

Page 7 of 10

Tested Item(s)	Result	MDL	Limit
	005		
Phthalates (DBP, BBP, DEHP, DIBP)			
Dibutyl phthalate (DBP) CAS#:84-74-2	N.D.	50 mg/kg	1000 mg/kg
Butyl benzyl phthalate (BBP) CAS#:85-68-7	N.D.	50 mg/kg	1000 mg/kg
Di-(2-ethylhexyl) phthalate (DEHP) CAS#:117-81-7	N.D.	50 mg/kg	1000 mg/kg
Diisobutyl phthalate (DIBP) CAS#:84-69-5	N.D.	50 mg/kg	1000 mg/kg

Sample/Part Description

No.	CTI Sample ID	Description
1	004	Black body(Tested as a whole)
2	005	Silvery metal pin

Remark: The sample(s) had been dissolved totally tested for Lead, Cadmium, Mercury.

-MDL = Method Detection Limit

-N.D. = Not Detected (<MDL or LOQ)

-mg/kg = ppm = parts per million

-1000 mg/kg = 0.1%

-LOQ = Limit of Quantification, The LOQ of Hexavalent chromium is 0.10 $\mu\text{g}/\text{cm}^2$

-▼The sample is negative for Cr(VI) – The Cr(VI) concentration is below 0.10 $\mu\text{g}/\text{cm}^2$. The coating is considered a non-Cr(VI) based coating. Information on storage conditions and production date of the tested sample is unavailable and thus Cr(VI) results represent status of the sample at the time of testing.

-According to the client's statement, the reasons for the multiple information in the "sample information" of this report may include (but are not limited to): supplying to different buyers, being sold to different countries or regions, former names, or mixtures of several substances.

- The sample(s) was tested as a whole, because it's impossible to disassemble or separate it by current equipment and technology. The result(s) shown on this report may be different from the content of any homogeneous material.

*=According to the client's statement, the material of the sample(s) fall into exemption items 7(c)-I according to EU Directive 2011/65/EU: Electrical and electronic components containing lead in a glass or ceramic other than dielectric ceramic in capacitors, e.g. piezoelectronic devices, or in a glass or ceramic matrix compound; According to the client's statement, lead mainly comes from the high melting temperature type solders. Lead in high melting temperature type solders (i.e. lead-based alloys containing 85 % by weight or more lead) is exempted from the restriction, with reference to EU Directive 2011/65/EU annex III Exemption Applications 7(a).

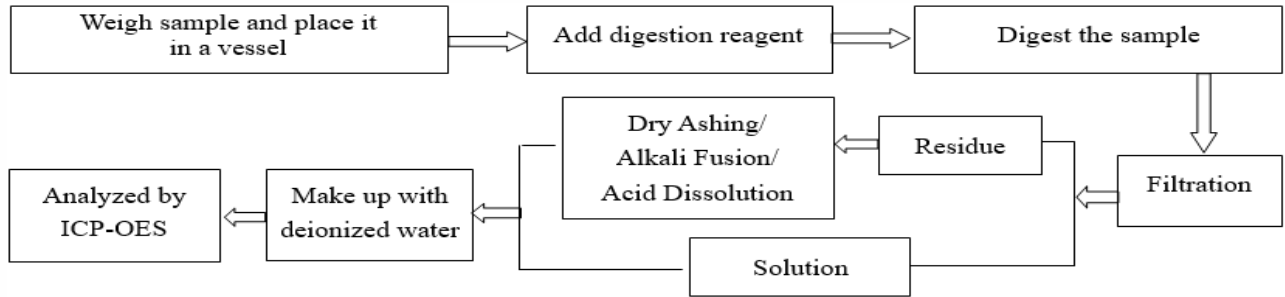
Test Report

Report No. A2250057107101005

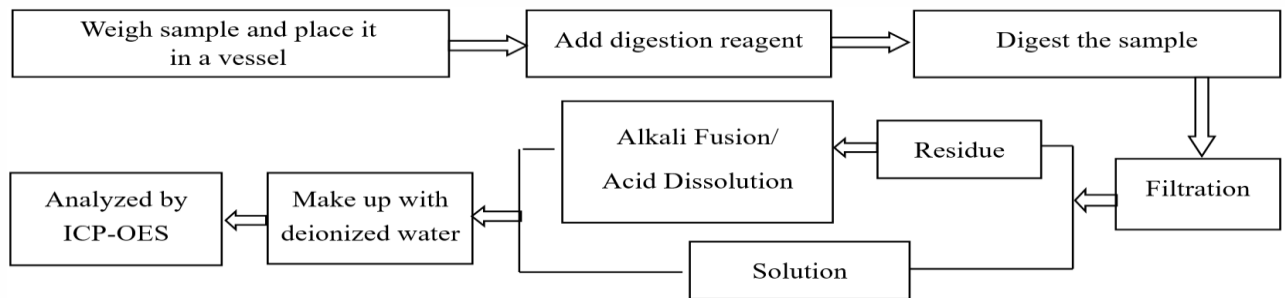
Page 8 of 10

Test Process

1. Lead (Pb), Cadmium (Cd), Chromium(Cr)

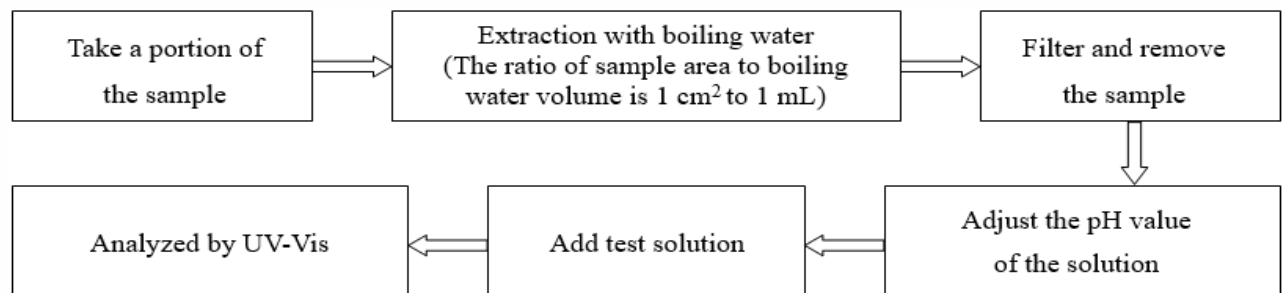


2. Mercury (Hg)

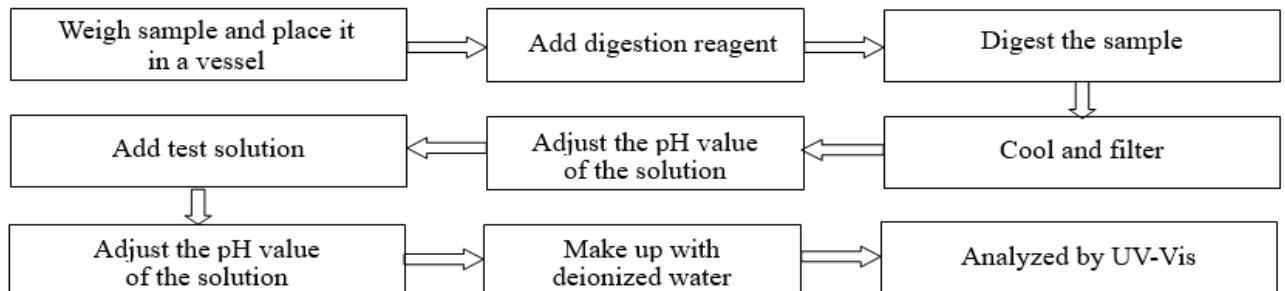


3. Hexavalent Chromium (Cr(VI))

(1) IEC 62321-7-1:2015



(2) IEC 62321-7-2:2017

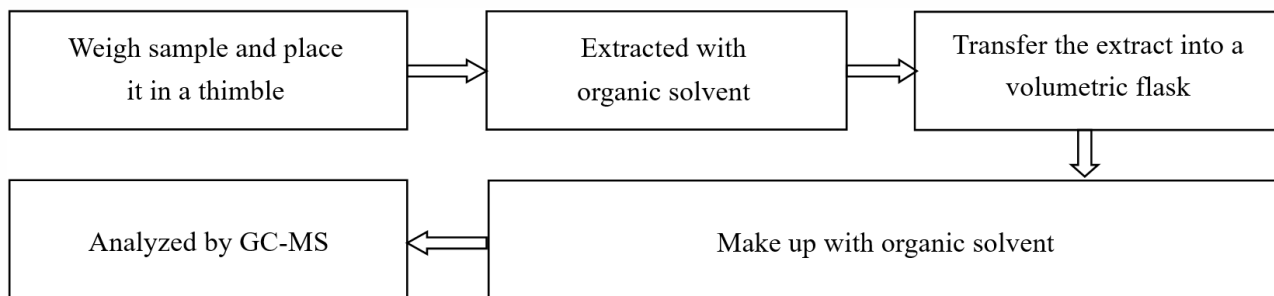


Test Report

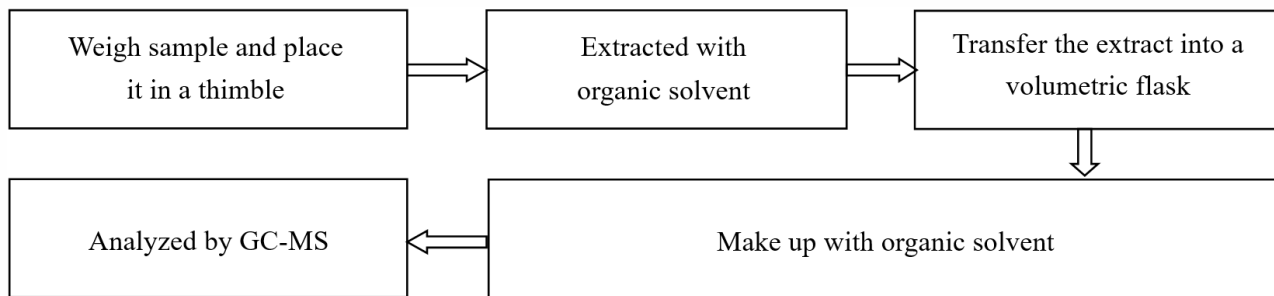
Report No. A2250057107101005

Page 9 of 10

4. Polybrominated Biphenyls (PBBs), Polybrominated Diphenyl Ethers (PBDEs)



5. Phthalates (DBP, BBP, DEHP, DIBP)

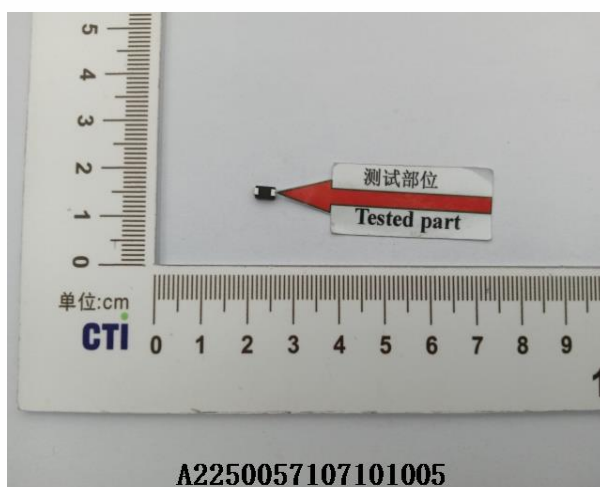
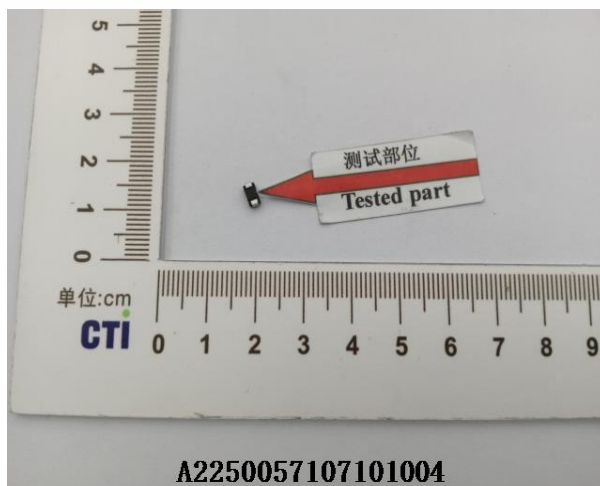


Test Report

Report No. A2250057107101005

Page 10 of 10

Photo(s) of the sample(s)



Statement:

1. This report is considered invalid without approved signature, special seal and the seal on the perforation;
2. The Company Name shown on Report and Address, the sample(s) and sample information was/were provided by the applicant who should be responsible for the authenticity which CTI hasn't verified;
3. The result(s) shown in this report refer(s) only to the sample(s) tested;
4. Unless otherwise stated, the decision rule for conformity reporting is based on Binary Statement for Simple Acceptance Rule (w=0) stated in ILAC-G8:09/2019 / CNAS-GL015:2022;
5. Without written approval of CTI, this report can't be reproduced except in full;
6. In case of any discrepancy between the English version and Chinese version of the testing reports (if generated), the Chinese version shall prevail.

*** End of Report ***